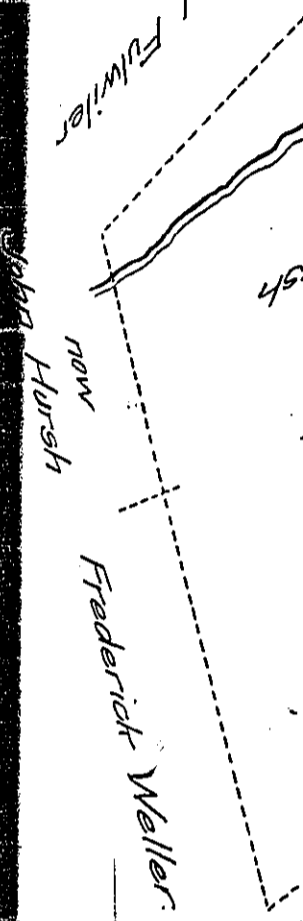


John Hursh  
now  
Michael Fulwiler



✓  
 Lancaster County  
 2 parts of David  
 Campbells Warrant  
 Now Jurus Marchalle  
 as ps.  
 17 . 107  
 35  
 17 . 142.

ton) Tow  
 acres, o  
 cent for  
 allowanc  
 in pursu  
 of Mar  
 Corner.  
 larger th  
 is retur

Samuel  
 IN TES

No 299  
 Accepted 6<sup>th</sup> Aug<sup>t</sup> 1840.